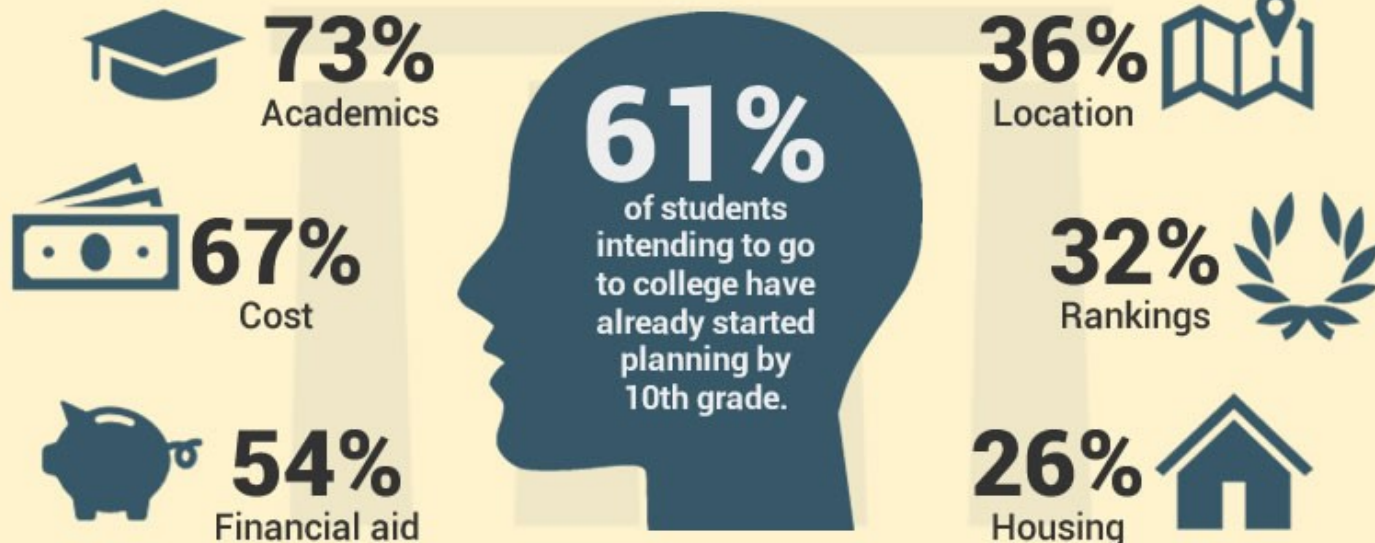


# Majority of students begin college planning during their freshman year of high school

Information students say they value when selecting a college



#KYHigherEdMatters

Source: *Serving the Virtual Consumer: Exceeding High School Student Expectations in 2022*. Modern Campus and Ruffalo Noel Levitz.

# Use It or Lose It

Focal points to reduce food loss & waste (FLW) at each stage of the value chain:



AGRICULTURAL PRODUCTION	GROCERY, DISTRIBUTION AND MANUFACTURING	RESTAURANTS AND FOODSERVICE	FOOD BANKS	HOUSEHOLD
<ul style="list-style-type: none"> <li>• By products (e.g. almond hulls, corn cob, wheat stalks) as animal feed</li> <li>• Refrigeration</li> <li>• Value-added processing on-site</li> <li>• Labor management</li> <li>• Pricing &amp; contracts</li> <li>• Agro-upcycling</li> <li>• Composting and anaerobic digestion</li> </ul>	<ul style="list-style-type: none"> <li>• Proper transport and handling</li> <li>• Item markdown programs</li> <li>• Inventory management &amp; contracts</li> <li>• Rescue of surplus food for people in need</li> <li>• Recycling &amp; upcycling</li> <li>• Composting and anaerobic digestion</li> </ul>	<ul style="list-style-type: none"> <li>• Portion size</li> <li>• Kitchen management</li> <li>• Inventory management &amp; contracts</li> <li>• Rescue of surplus food for people in need</li> <li>• Recycling &amp; upcycling</li> <li>• Composting and anaerobic digestion</li> </ul>	<ul style="list-style-type: none"> <li>• Infrastructure for perishables</li> <li>• Partnerships</li> <li>• Tax incentives</li> </ul>	<ul style="list-style-type: none"> <li>• Standardized expiration date labeling</li> <li>• Imperfect produce</li> <li>• New packaging and preservation options</li> <li>• Consumer education and behavior change</li> </ul> <p data-bbox="1583 1308 1921 1338">Sponsor: United Soybean Board</p>

As we become more conscious of our foodprints, with the goal of using everything harvested from the land to its highest purpose of nourishing people, our food systems become virtuous cycles.



# Girls On The Run

Established 1996

A nonprofit organization committed to improving the physical, mental, and spiritual health of young females

In 2015, over  
**179,000**  
girls participated in GOTR

Sites in all **50** states  
and **36** sites in Central KY

## General Information

Meetings are twice a week for 10 weeks

GOTR curriculum is proven to increase self-esteem

A celebratory 5k tops off each season

GOTR targets improvement in:

Confidence

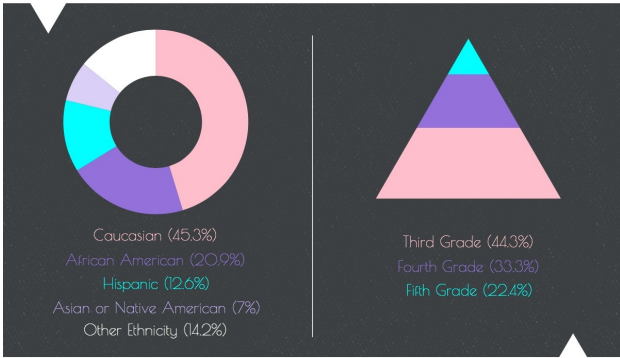
Character

Contribution

Caring

Connection

## DIVERSITY OF PARTICIPANTS



## DISTRIBUTION OF PARTICIPANTS BY GRADE

### WHY

Girls on the Run?

Adolescents with low self-esteem are **1.26 & 1.6** times more likely to develop major depression disorder and anxiety disorder

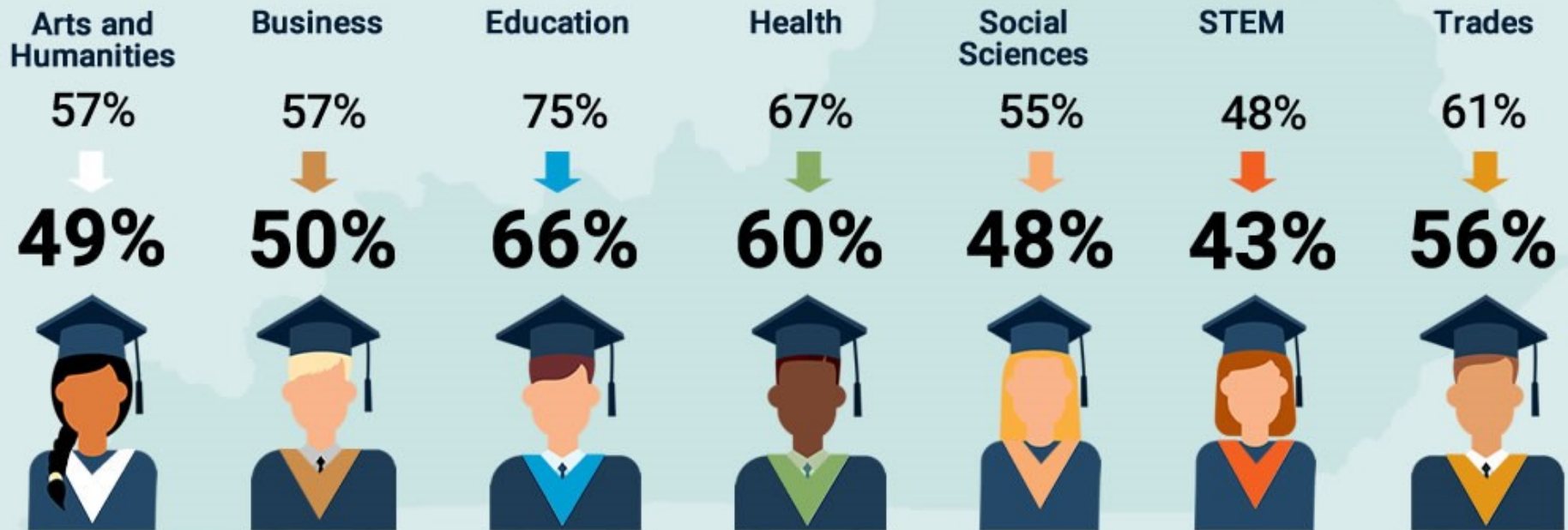
7 in 10 girls believe they are not good enough or do not measure up in some way

Sources

- Gabriel, K. P., DeBady, R. G., High, R. R., & Reising, E. T. (2001). Girls on the Run: A quasi-experimental evaluation of a developmentally focused youth sport program. *Journal of Physical Activity and Health, 8*(2), 233-244.
- <http://www.girlsontherun.org/first-look/Start-to-Count>
- <http://www.girlsontherun.org/About-Us/Our-History>
- <http://www.girlsontherun.org>
- <http://www.girlsontherun.org/Self-Esteem-Report-2012-2015on%20Campus%20for%20K%20and%208th%20.pdf>
- Trötschel, R., H. Dornik, M. B. Meffert, T. E. Robinson, R. W. Puffner, R., & Caspi, A. (2006). Low self-esteem during adolescence predicts poor health, criminal behavior, and limited economic prospects during adulthood. *Developmental Psychology, 42*(2), 385-392. doi:10.1037/0012-1649.42.2.385

# Retention of graduates as part of the workforce a challenge for Kentucky, especially for STEM fields

Percentage of Graduates Working in Kentucky, One and Five Years After Graduation



#KYHigherEdMatters

Source: Multi-State Postsecondary Report. KYSTATS.