

SALE TECHNIQUE

Cattle will be co-mingled into the following contemporary groups:

Breed Type:

Black (Angus based)
Black Cross
Cross-bred
Earred

Frame and Muscle:

Medium to Large Frame #1
Medium to Large Frame #2
Small Frame #1

Weight:

Minimum weight will be 500 pounds with groups broken at 75-pound intervals.

All others will be classified as outs, including stags, and CPH tags will be removed from the outs.

For more information or to register, contact your County Extension Agent...

In Kentucky

Daviess County - (270) 685-8480
Hancock County - (270) 927-6618
Henderson County - (270) 826-8387
Hopkins County - (270) 821-3650
McLean County - (270) 273-3690
Muhlenberg County - (270) 338-3124
Ohio County - (270) 298-7441
Union County - (270) 389-1400
Webster County - (270) 639-9011

In Indiana

Spencer County - (812) 649-6022
Perry County - (812) 547-7084

KBN Facilitator

Ben Lloyd - (270) 993-1074

Green River Area CPH60 Pre-Conditioned Cattle Sale *December 5, 2024*



Kentuckiana Livestock Market

Sponsored by:

*Green River Area
Beef Improvement Group*

*Green River Area Cooperative Extension
Daviess County Cattlemen's Association
Kentucky Beef Network*

*With support of the
Kentucky Department of Agriculture*



COOPERATIVE EXTENSION

 University of
Kentucky
College of Agriculture,
Food and Environment



Cooperative Extension Service
Agriculture and Natural Resources
Family and Consumer Sciences
4-H Youth Development
Community and Economic Development

Educational programs of Kentucky Cooperative Extension serve all people regardless of economic or social status and will not discriminate on the basis of race, color, ethnic origin, national origin, creed, religion, political belief, sex, sexual orientation, gender identity, gender expression, pregnancy, marital status, genetic information, age, veteran status, or physical or mental disability. University of Kentucky, Kentucky State University, U.S. Department of Agriculture, and Kentucky Counties, Cooperating.
LEXINGTON, KY 40546



Disabilities
accommodated
with prior notification.

GREEN RIVER PRE-CONDITIONED CATTLE SALE UPCOMING DATES

December 5, 2024—Heifers & Steers

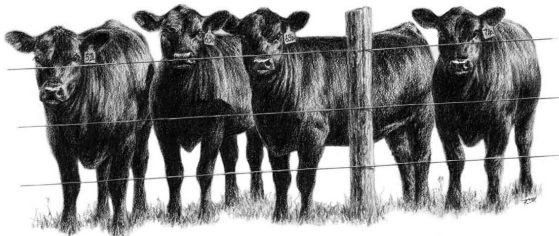
February 20, 2025—Heifers & Steers

April 24, 2025—Heifers & Steers

August 14, 2025—Heifers & Steers

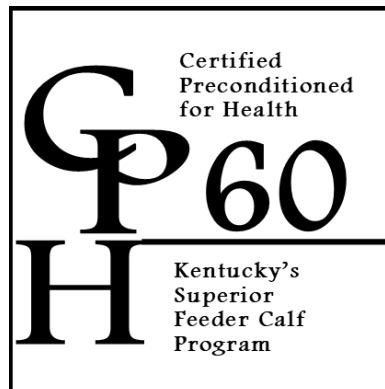
TERMS

- Kentuckiana Livestock marketing fee will be 3.00% commission of your total sale value.
- CPH60 ear tags are required and available at Green River Area County Extension Offices.
- \$2.00/head ear tag fee will be withheld by sale barn.



GREEN RIVER CPH60 SALE

- All calves must be weaned a minimum of 60 days prior to sale.
- It is mandatory that all cattle have free choice of required analysis mineral.
- All calves must be able to eat from a feed trough or bunk and drink water from a tank or automatic waterer.
- All surgery (castration and dehorning) should have been done and completely healed prior to sale.
- All calves must be completely dehorned and healed.
- Dewormed with **Dectomax—Zoetis** or **Long Range—Merial** endectocide. Must be applied no more than 60 days prior to sale.
- Vaccinated and boosted for Four-Way Respiratory (IBR,PI₃,BRSV,BFD): 1st Vaccine – **Cattle Master—Zoetis** or **Bovishield Gold 5—Zoetis**; Booster– **Bovishield Gold 5—Zoetis**. The booster vaccine must be given a minimum of 14 days prior to sale and be a modified live vaccine (*BRSV may be killed or MLV*). The earliest any vaccine should be given is not more than 90 days prior to sale.
- Vaccinated for Pasturella and Clostridial 7-Way using **One Shot Ultra 7—Zoetis**.



- Each consigner will certify that health and management practices were implemented and provide receipts of medication purchases.
- Cattle that are yearlings and that have been weaned 90 days by the time of the sale will not be required to re-vaccinate if all health standards were completed previously, only dewormed.
- Heifers are guaranteed open at time of sale and steers are guaranteed not to be bulls!! Seller agrees to reimburse buyer \$200.00 for pregnant heifers or intact bulls. All claims will be properly verified by a veterinarian within four (4) months of sale.
- Calves must have access to a free choice mineral supplement which contains a minimum of 1400 ppm copper (no copper oxide), 26 ppm selenium, 3000 ppm zinc, 3000 ppm manganese, and a salt content of 18-25%.



OBJECTIVE

To provide an opportunity for producers to group cattle into marketable lot sizes, to maintain identification of health and management practices, and to provide a positive reputation toward calves marketed from the Green River Area of Kentucky.